

Standardized cell lines and reference compounds

May 2019

More than 40 cell lines and 17 reference compounds tested and ready to use for efficacy assays

Thanks to a large library of already standardized cell lines and reference compounds, INOVOTION carry out efficacy assays very quickly to deliver result in 1 month from the cell graft.

- Optimum grafting conditions determined for 40 different cell lines
- Optimised doses and number of treatments determined for 17 reference compounds on different cell lines = dozens of different combinations
- New standardized cell lines and reference compounds added monthly

Working on other cell lines? Need a specific cell line/reference compound?

Contact us! We will develop your specific assay in only 4 weeks

contact@inovotion.com

Standardized cell lines and reference compounds (Adrenal gland to liver)

| Tissues | Cell lines | Standardised reference compounds | | | | | | | | | | | | | | | |
|-------------------|------------|----------------------------------|-------------|-----------|-------------|-----------|------------|---------|----------|-----------|------------|---------------|--------------|-----------|--------------|--------------|-------------|
| | | Cytarabine | Doxorubicin | Etoposide | Gemcitabine | Herceptin | Irinotecan | Kadcyla | Keytruda | Lapatinib | Paclitaxel | Streptosozine | Tamoxifen-OH | Tecentriq | Temozolomide | Temsirolimus | Vinorelbine |
| Adrenal gland | H295R | ✓ | | | | | | | | | | | | | | | |
| Bone | 143B | ✓ | | | | | | | | | | | | | | | |
| | MNNG | ✓ | | | | | | | | | | | | | | | |
| Brain | GL261 | ✓ | | | | | | | | ✓ | | | ✓ | | | | |
| | U87 | | | | | | | | | ✓ | | | | | | | |
| Breast | BT-474 | ✓ | | | | | ✓ | | | ✓ | | | | | | | ✓ |
| | JIMT-1 | ✓ | | ✓ | | | | | ✓ | ✓ | | | | | | | ✓ |
| | MCF10A | | | | | | | | | | | | | | | | |
| | MCF7 | | | | | | | | | ✓ | | ✓ | | | | | |
| | MDA-MB-231 | ✓ | ✓ | | | ✓ | | ✓ | | ✓ | | ✓ | | | | | ✓ |
| | SKBR3 | | | | | | | | | | | | | | | | |
| | T-47D | | | | | | | | | | ✓ | | | | | | |
| Cervix | HeLa | ✓ | | | | | | | | | | | | | | | |
| Colon | Colo 205 | ✓ | | | | | | | | ✓ | | | | | | | |
| | HCT116 | ✓ | | ✓ | | ✓ | | | | ✓ | | | | | | | ✓ |
| | HT29 | ✓ | | | | | | | | ✓ | | | | | | | |
| Connective tissue | HT-1080 | | | | | | | | | ✓ | | | | | | | |
| Kidney | 786-O | | | | | | | | | | | | | | | | |
| Liver | Hep3B | ✓ | | ✓ | | | | | | ✓ | | | | | | | |
| | HepG2 | ✓ | | ✓ | | | | | | ✓ | | | | | | | ✓ |
| | HuCC-T1 | | | ✓ | | | | | | | | | | | | | |

Our R&D department also develops custom models on-demand, contact us at contact@inovotion.com

Standardized cell lines and reference compounds (Lung to stomach)

| Tissues | Cell lines | Standardised reference compounds | | | | | | | | | | | | | | | |
|------------------|------------|----------------------------------|-------------|-----------|-------------|-----------|-----------|---------|----------|-----------|------------|----------------|--------------|-----------|--------------|--------------|-------------|
| | | Cytarabine | Doxorubicin | Etoposide | Gemcitabine | Herceptin | Innotecan | Kadcyla | Keytruda | Lapatinib | Paclitaxel | Streptozotocin | Tamoxifen-OH | Tecentriq | Temozolomide | Temsirolimus | Vinorelbine |
| Lung | A427 | | | | | | | | | | | | | | | | |
| | A549 | ✓ | | ✓ | | | | | | ✓ | | | | | | | |
| | H292 | | | | | | | | | ✓ | | | | | | | |
| | H358 | | | | | | | | | ✓ | | | | | | | |
| | H460 | | | | | | | | | ✓ | | | | | | | |
| | H520 | ✓ | | ✓ | | | | | | ✓ | | | | | | | |
| Lymphoid | Raji | | | | | | | | | | | | | | | | |
| | SU-DHL-4 | ✓ | | ✓ | | | | ✓ | | | | | | | ✓ | ✓ | |
| Muscular | RH30 | ✓ | | ✓ | | | | | | ✓ | | | | | | | |
| Oesophagus | OE19 | ✓ | | | | | | | | | | | | | | | |
| Ovary | SK-OV-3 | ✓ | | | | | | | | | | | | | | | |
| Pancreas | Bx-PC3 | | | | | | | | | | | | | | | | |
| | HPAF-II | | | | | | | | | | | | | | | | |
| | L1S | | | | | | | | | | ✓ | | | | | | |
| | L5 | | | | | | | | | | ✓ | | | | | | |
| | Mia-Paca2 | ✓ | | ✓ | | | | | | ✓ | | | | | | | |
| | Panc-1 | | | | | | | | | | | | | | | | ✓ |
| Peripheral blood | MV4-11 | ✓ | | | | | | | | | | | | | | | |
| Prostate | PC3 | | | | | | | | | | | | | | | | ✓ |
| Skin | A375 | ✓ | | | | | | | | ✓ | | | | | | | |
| | B16-F10 | | | | | | | | | | | | | | | | |
| | Colo829 | ✓ | | ✓ | | | | | | ✓ | | | | | | | ✓ |
| | MeWo | ✓ | | | | | | | | | | | | | | | |
| | SK-MEL-28 | | | | | | | | | | | | | | | | |
| Stomach | N87 | ✓ | | | ✓ | | | | | | | | | | | | |

Our R&D department also develops custom models on-demand, contact us at contact@inovotion.com

Mission

Because we know that one of your main preoccupations is to optimize your preclinical and discovery studies, INOVOTION has developed a unique and cutting-edge *in vivo* technology. As a Contract Research Organization (CRO) dedicated to *in vivo* evaluation for drug discovery, particularly in oncology, INOVOTION is a sought-after partner for drug discovery pharmaceutical and biotech companies as well as academic labs all over the world.

Our main missions are to:

- Help you find the best anticancer candidate treatment
- Detect the first *in vivo* toxicity effects of your candidate compounds
- Improve the productivity of your preclinical and discovery process by maximizing your lead optimization phase
- Accelerate the overall drug discovery process to answer unmet medical needs in oncology

Compounds types

- Small Molecules
- Peptides
- Antibodies
- Checkpoint inhibitors
- Proteins
- Natural compounds
- Viruses
- Nanostructures

Cell lines / PDX

- Standard cell lines
- Wild type or genetically modified
- Patient cells - PDX
- Cell lines panel

Treatments types

- Compound by itself
- Synergetic effects
- Sequential effects

Read-out

- Tumor growth
- Metastatic invasion analysis
- Toxicity
- Angiogenesis
- Tumor infiltration



Efficacy Evaluation



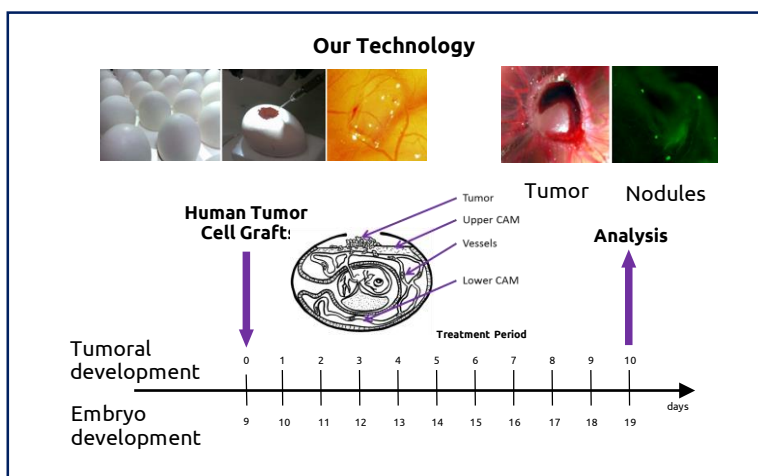
Target Validation



Toxicity Evaluation



Multi-cancer Screening



INOVOTION inc.

US office

✉ contact@inovotion.com

☎ (617)-337-7855

📍 185 Alewife Brook Parkway, suite 210, Cambridge, MA 02138, USA



www.inovotion.com

INOVOTION SA

HQ & lab facilities

✉ contact@inovotion.com

☎ +33 475 549 512

📍 5 Avenue du grand Sablon 38700 La Tronche France